

Steel Wheel with Housing for dia.19/20mm round track



#1001-1003



#1001B

Part #	Info	Per Piece	Box
1001	90mm double bearing 200kg/wheel	\$12.00	\$12.00 x20 per
1002	90mm heavy duty 300kg/wheel bearing	\$22.00	\$16.50 x 20 per
1003	90mm white nylon Wheel s/s bracket	\$24.00	\$18.00 x 20 per
1001B	90mm double bearing 120kg/wheel black nylon wheel	\$18.00	\$13.50 x 20 per
1004	120mm double bearing 400kg/wheel	\$20.00	\$15.00 x 12 per

Steel Wheel



Part #	Info	Per Piece	Box
1005	120mm (width 44mm) 400kg/wheel	\$16.00	\$12.00 x 12 per

Steel Wheel with V-Groove

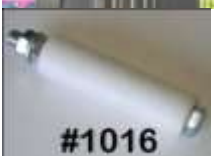


Part #	Info	Per Piece	Box
1001V	90mm double bearing 200kg/wheel	\$16.00	\$12.00 x 20 per

Nylon Top Roller



#1011



#1016

Part #	Info	Per Piece	Box
1011	40x60mm long zinc plate steel	\$6.80	\$5.10 x 50 per
1011A	40x60mm long stainless steel 304	\$28.00	\$21.00 x 20 per
1011B	40x60mm long Black Nylon	\$6.80	\$5.10 x 50 per
1012	37x30 mm long Nylon	\$4.00	\$3.00 x 50 per
1013	65mm top bearing roller With galvanized brackets (p/set)	\$100.00	\$75.00 x 10 per
1014	30x40 mm long Nylon	\$5.60	\$4.20 x 50 per
1016	40x140mm length zinc plate steel	\$14.00	\$10.50 x 25 per
1019	Angle Bracket for Roller Zinc Plated	\$4.00	\$3.00 x 25 per
1019K	Angle Bracket -180 Long Galvanised	\$12.00	\$9.00 x 25 per



#1019



#1019K

Sliding Blocks



#1025

Part #	Info	Per Piece	Box
1021	75mm (UV stabilized) ABS molded	\$8.00	\$6.00 x 44 per
1023	75mm HDDP cut	\$12.00	\$12.00 x 44 per
1024	100mm HDDP cut	\$21.00	\$21.00 x 24 per
1025	100mm (thick version) HDDP cut	\$27.00	\$27.00 x 24per
1029	Glider 210mm Length	\$4.00 (per pairs)	\$3.00 x 50per



#1024



Hinges



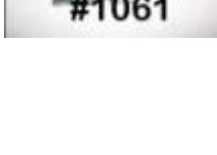
#80106401



#80106402



#1060



#1061

Part #	Info	Per Pair	Box
80106401	Loose Pin Weld On Pin size 20x180mm long	\$14.00	\$10.50 x 12 per
80106402	Loose Pin Weld On Pin size 20x90mm long	\$8.40	\$6.30 x 24 per
1060	150kg Steel Ball Hinge Weld/Weld Left/Right	\$10.00	\$7.50 x 32 per
1061	150kg Steel Ball Hinge Weld/Bolt Left/Right	\$8.00	\$6.00 x 32 per
1062	150kg Steel Ball Hinge Bolt/Bolt Left/Right	\$8.80	\$6.60 x 32 per
1063	Butt Hinge Zinc Plate 100x75x2.5mm Steel	\$2.40	\$1.80 x 50 per
1064	Butt Hinge Stainless 100x75x2.2 Steel 304	\$8.00	\$6.00 x 50 per
1068	250kg Steel Ball Hinge Shaft ϕ 19mm Left/Right	\$16.00	\$12.00 x 50 per



#1062



#1063-1064



#1068

Ball Bearing Hinge



#1051



#1052-1053

Part #	Info	Per Set	Box
1051	Housing dia. 47mm Load capacity: 300kg	\$24.00	\$24.00 x 18 per
1052	Housing dia. 47mm Load capacity: 300kg	\$28.50	\$28.50 x 18 per
1053	Housing dia. 68mm Load capacity: 500kg	\$51.00	\$51.00 x 8 per
1054	Housing dia. 68mm Load capacity: 500kg	\$51.00	\$51.00 x 8 per



#1054

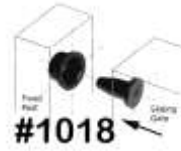
Punch-in Ball Bearing Hinge

Part #	Info	Per Set	Box
1055	Load 300kg (sq.50) Aluminum Hub	\$33.00	\$33.00 x 18 per
1055B	Load 450kg (sq.65) Aluminum Hub	\$54.00	\$54.00 x 8 per
1055C	Load 500kg (sq.75) Aluminum Hub	\$60.00	\$60.00 x 8 per
1056A	Load 300kg (sq.40) Steel Hub (thickness 2mm)	\$33.00	\$33.00 x 18 per
1056	Load 300kg (sq.50) Steel Hub (thickness 3mm)	\$33.00	\$33.00 x 18 per
1056B	Load 450kg (sq.65) Steel Hub (thickness 3mm)	\$54.00	\$54.00 x 8 per
1056C	Load 500kg (sq.75) Steel Hub (thickness 3mm)	\$60.00	\$60.00 x 8 per



Gate Accessories

Part #	Info	Per Piece	Box
1017	Swing Gate Stopper zinc plate steel	\$12.00	\$9.00 x 20 per
1018	Sliding Gate Guide-In Nylon	\$7.20	\$5.40 x 50 per
1045	Gate Stopper (adjustable) zinc plated steel	\$9.20	\$6.90 x 30 per
1046	Gate Stopper zinc plated steel	\$9.20	\$6.90 x 30 per



Gate Hinge

Part #	Info	Per Set	Box
1057A	25x25mm Zinc Plated Steel	\$10.00	\$7.50 x 50 per
1057B	30x30mm Zinc Plated Steel	\$10.00	\$7.50 x 50 per
1057C	38x25mm Zinc Plated Steel	\$10.00	\$7.50 x 50 per
1058A	Pintle Hinge For Steel Post	\$4.40	\$3.30 x 50 per
1058B	Pintle Hinge- For Brick Post	\$6.40	\$4.80 x 50 per



Flat Plate

Part #	Info	Per Piece	Box
8000	4 hole plate (150x150x5) Galvanized Steel	\$5.00	\$3.75 x 30 per
8001	2 hole plate (137x73x5) Galvanized Steel	\$2.80	\$2.10 x 50 per
8002	4 hole plate (137x100x5) Double eye-zinc plated	\$3.20	\$2.40 x50 per
8002A	4 hole plate (137x100x10) Galvanized Steel (10mm)	\$7.20	\$5.40 x 25 per
8003	2 hole plate (137x73x5) Zinc Plated Steel	\$2.80	\$2.10 x50 per
8004	4 hole plate (137x100x5) Double eye-zinc plated	\$3.20	\$2.40 x50 per
8005	2 hole plate (137x73x5) Aluminum	\$2.80	\$2.10 x 50 per
8006	4 hole plate (137x100x5) Aluminum	\$3.20	\$2.40 x50 per



Gear Racks (Steel and Nylon)

Part #	Info	Per Piece	Box
1041	4 bracket Nylon Rack 1 meter length	\$13.60	\$10.20 x 20 per
1042	6 bracket Nylon Rack 1 meter length	\$16.00	\$12.00 x 20per
1044	Leg Extender 85mm length	\$1.60	\$1.20 x 50 per
1048	Steel Rack 12x30mm 1 meter length	\$18.00	\$13.50 x10 per



Plastic Hinge

Part #	Info	Per Pair	Box
1065	Plastic Spring Hinge (non-adjustable)	\$8.00	\$6.00 x 75per
1066	Plastic Hinge No spring	\$8.00	\$6.00 x 75 per



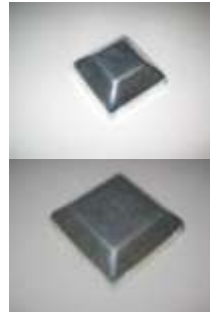
Drop Bolt

Part #	Info	Per Piece	Box
1073	400mm Drop Bolt Lock Hot-dip steel	\$4.40	\$3.30 x40 per
1073B	550mm Drop Bolt Lock Hot-dip steel	\$5.60	\$4.20 x 30 per
1074	400mm Drop Bolt Lock Zinc plate steel	\$3.80	\$2.85 x 40 per
1074A	400mm Drop Bolt Lock Stainless Steel 304	\$12.00	\$9.00 x 40 per
1077	Drop Bolt Lug ϕ 17mm Galvanized Steel	\$1.20	\$0.90 x 500 per
1078A	900mm Drop Bolt Galvanized Steel ϕ 16mm	\$14.00	\$10.50 x 15 per
1078B	1200mm Drop Bolt Galvanized Steel ϕ 16mm	\$18.00	\$13.50 x 15 per
1078C	1500mm Drop Bolt Galvanized Steel ϕ 16mm	\$22.00	\$16.50 x 15 per



Steel Caps (Square)

Part #	Info	Per Piece	Box
2031	50x50mm Pre-Gal 1.2mm thick	\$0.60	\$0.45 x 500 per
2032	65x65mm Pre-Gal 1.2mm thick	\$1.20	\$0.90 x 250 per
2033	75x75mm Pre-Gal 1.2mm thick	\$1.60	\$1.20 x 100 per
2034	90x90mm Pre-Gal 1.2mm thick	\$2.40	\$1.80 x 100 per
2035	100x100mm Pre-Gal 1.2mm thick	\$3.20	\$2.40 x 100 per



*= stock available after 1st July,2011

Plastic Caps



#2001B/W



#2002-2003



#2004-2005



#2006-2007



#2008-2010

Part #	Info	Per Piece	Box
2001B	19mm Dome Plug Black	\$0.10 (100pcs/bag)	\$0.075 x 3000 per
2001W	19mm Dome Plug White	\$0.10 (100pcs/bag)	\$0.075 x 3000 per
2002	16mm Circular cap Black	\$0.108	\$0.081 x 1000 per
2003	19mm Circular cap Black	\$0.12	\$0.09 x 1000 per
2004	38x25mm Rectangle cap Black Flat	\$0.22	\$0.165 x 1000 per
2005	50x25mm Rectangle cap Black Flat	\$0.22	\$0.165 x 1000 per
2006	40x40mm Square cap Black Flat	\$0.22	\$0.165 x 1000 per
2007	50x50mm Square cap Black Flat	\$0.32	\$0.24 x 500 per
2008	50x50mm Square cap Black Pyramid	\$0.24	\$0.18 x 500 per
2010	65x65mm Square cap Black Pyramid	\$0.36	\$0.27 x 300 per

D-Latch / Padbolt



Part #	Info	Per Piece	Box
1071	D-Latch + Striker Zinc Plated Steel	\$3.60	\$2.70 x 100 per
1071A	D-Latch + Striker Stainless Steel 304	\$9.20	\$6.90 x50 per
1071B	D-Latch + Striker Hot Dip Galvanized	\$4.00	\$3.00 x 100 per
1072	Round D-Latch Handle Zinc Plated Steel	\$0.80	\$0.60 x100 per
1072A	Flat D-Latch Handle Stainless Steel 304	\$2.00	\$1.50 x100 per
1075	Shoot Padbolt (150mm) Double eye-zinc plated	\$2.00	\$1.50 x 80 per
1076	Shoot Padbolt (100mm) Single eye-zinc plated	\$1.00	\$0.75 x 100 per
1080	Security Padbolt Set (dia 20 x410mm) including Lock Hot Dip Galvanized	\$60.00	\$45.00 x 10 per



#1080

Fence Bracket (Aluminum)



Part #	Info	Per Piece	Box
3001	25x38mm Standard	\$0.88	\$0.66 x 400 per
3002	40x40mm Standard	\$1.04	\$0.78 x 350 per
3003	25x38mm Horizontal	\$0.76	\$0.57 x 500 per

#3003

Fence Bracket (Aluminum)



Part #	Info	Per Piece	Box
3005	50x50mm Single Lug	\$3.00	\$2.25 x 105 per
3006	50x50mm double lug Double Lugs	\$3.20	\$2.40 x 105 per
3007	30x30mm Single Lug	\$0.76	\$0.57 x 500 per
3008	30x30mm Double Lugs	\$0.88	\$0.66 x 500 per

Fence Bracket (Zinc Plated)



Part #	Info	Per Piece	Box
3301	25x38mm Double Sided Zinc Plated	\$0.44	\$0.33 x 400 per
3302	25x38mm Single Side Zinc Plated	\$0.40	\$0.30 x 500 per
3303	40x40mm Double Sided Zinc Plated	\$0.44	\$0.33 x 400 per
3304	30x30mm Double Sided Offset Holes Zinc Plated	\$0.44	\$0.33 x 400 per
3305	30x30mm Double Side Centered Holes Zinc Plated	\$0.44	\$0.33 x 400 per

L-Clip and Brackets



Part #	Info	Per Piece	Box
3091	L-Clip 35x20mm Aluminum	\$0.24	\$0.18 x 1000 per
3101	Z-Bracket 32x120x5mm Galvanized Steel	\$1.40	\$1.05 x 120 per
3102	Angel Bracket 30x30mm Galvanized Steel 3mm	\$0.24	\$0.18 x 1000 per



Security Fence Bracket (Hot Dip Galvanized)

Part #	Info	Per Piece	Box
3321	40x40mm Security Fence Bracket – Hot Dip (One for both left & right hand)	\$2.00	\$1.50 x 120 per

*= stock available after 1st July,2011

Steel Rings



Part #	Info	Per Piece	Box
4001	88mm Steel Ring 8mm round zinc	\$0.80	\$0.60 x 250 per
4002	90mm Steel Pipe Ring 11x11mm zinc	\$2.40	\$1.80 x 100 per
4003	100mm Steel Pipe Ring 11x11mm zinc	\$2.60	\$1.95 x 90 per
4101	88mm Aluminum Ring 8mm round	\$0.80	\$0.60 x 300 per
4102	90mm Cast Aluminum 20x6mm Ring	\$2.00	\$1.50 x 100 per

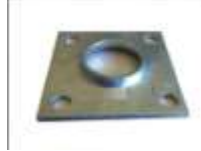


Steel Caps (Hot Dip Galvanized)



Part #	Info	Per Piece	Box
6102	32mm Hot Dip Galvanized	\$0.76	\$0.57 x 600 per
*6103	40mm Hot Dip Galvanized	\$0.88	\$0.66 x 500 per

Oval Flange



Part #	Info	Per Piece	Box
6133	32mm Hot Dip Galvanized	\$2.4	\$1.80 x 100 per
*6134	40mm Hot Dip Galvanized	\$3.0	\$2.25 x 100 per
6135	50mm Hot Dip Galvanized	\$3.60	\$2.70 x 80 per

Oval Flange



Part #	Info	Per Piece	Box
6102	25mm Galvanized Steel	\$1.00	\$0.75 x 240 per
6103	32mm Galvanized Steel	\$1.60	\$1.20 x 100 per
6104	40mm Galvanized Steel	\$1.80	\$1.35 x 100 per
6105	50mm Galvanized Steel	\$2.40	\$1.80 x 80 per

Fence Clamp



Part #	Info	Per Piece	Box
*6301	TFC2525 Galvanized Steel	\$3.20	\$2.40 x 50 per
*6302	TFC4040 Galvanized Steel	\$4.20	\$3.15 x 40 per

Farm Packs



Part #	Info	Per Set	Box
6501	Ring Chain Catches Galvanized Steel CAC1	\$3.60	\$2.70 x 40 per
*6502	Gate Pack FGP2 Galvanized Steel	\$11.00	\$8.25 x 10 per
*6503	Gate Pack FGP1 Galvanized Steel	\$14.00	\$10.50 x 10 per

Cross/Diamond



Part #	Info	Per Piece	Box
4051	90mm Steel Cross 15x5mm Zinc Plated	\$0.88 Set	\$0.66 x 200 per
4052	90mm Steel Diamond 15x5mm Zinc Plated	\$1.20 Set	\$0.90 x 200 per
4151	90mm Aluminum Cross 15x5mm	\$0.88 Set	\$0.66 x 200 per
4152	90mm Aluminum Diamond 15x5mm	\$1.20	\$0.90 x 200 per

Steel Caps (Pre-Gal)



Part #	Info	Per Piece	Box
6002	32mm Pre-Galv Steel	\$0.68	\$0.51 x 600 per
6003	40mm Pre-Galv Steel	\$0.76	\$0.57 x 500 per
6004	50mm Pre-Galv Steel	\$1.16	\$0.87 x 300 per
6006	80mm Pre-Galv Steel	\$1.80	\$1.35 x 160 per
6007	100mm Pre-Galv Steel	\$2.00	\$1.50 x 120 per

Fixed Tee 1



Part #	Info	Per Piece	Box
*6205	T5025 Galvanized Steel	\$3.80	\$2.85 x 40 per
6206	T2532 Galvanized Steel	\$3.40	\$2.55 x 40 per

Fixed Cross



Part #	Info	Per Piece	Box
6403	X3240 Galvanized Steel	\$5.20	\$3.90 x 30 per
6404	X2532 Galvanized Steel	\$4.60	\$3.45 x 30 per

Fixed Corner



Part #	Info	Per Piece	Box
*6402	C3250 Galvanized Steel	\$8.00	\$6.00 x 20 per

*= stock available after 1st July, 2011

Nylon Frame Anchor



Part #	Info	Per Piece	Box
86820207	6x40mm	\$0.036 x1000	\$0.027 x5000 per
86820109	6x60mm	\$0.044 x1000	\$0.033 x5000 per
86820215	8x60mm	\$0.08 x200	\$0.06 x1000per
86820216	8x80mm	\$0.11 x200	\$0.085 x1000per
86820222	10x80mm	\$0.16 x100	\$0.12 x600 per
86820223	10x100mm	\$0.20 x100	\$0.15 x600 per

Nylon Plug



Part #	Info	Per Piece	Box
86820103	8x40mm	\$0.02 x1000	\$0.015 x10,000 per
86820104	10x50mm	\$0.024 x1000	\$0.018 x 5000 per

Tek Screw – Galvanised Class 3 AS3566



Part #	Info	Box
81810100	#10-16x16	\$0.017 X4000 per
81810200	#12-14x20	\$0.03 x2500 per
81810500	#14-20x22	\$0.042 x2000 per



Tek Screw - #12-14x20 with colour Class 3 AS3566



Part#	Colour
81810201	Satin Black
81810202	Primrose

\$0.04x2500

Sleeve Anchor



Part #	Info	Per Piece	Box
80830203	M8/10 x50 Zinc Plated	\$0.16 x100	\$0.12 x600 per
80830206	M8/10x75 Zinc Plated	\$0.24 x100	\$0.18 x600 per
80830209	M8/10x100 Zinc Plated	\$0.28 x100	\$0.21 x600 per
81830203	M8/10x50 Hot Dip Galvanized	\$0.24 x100	\$0.18 x600 per
81830208	M8/10x75 Hot Dip Galvanized	\$0.32 x100	\$0.24 x600 per

Inner Hexagon Counter Sink Screw Class 3 AS3566



Part #	Info	Box
81812100	#14x50	\$0.055 x1200 per
81812300	#14x100	\$0.10 x600 per
81812500	#14x125	\$0.17 x500 per

Tek Screw - #10-16x16 with colour Class 3 AS3566



Part #	Colour	Part #	Colour
81810101	Satin Black		
81810102	Primrose		
81810103	Merino		
81810104	Wheat		
81810105	Beige		
81810106	Slate Grey		
81810107	Mist Green		
81810108	Rivergum		

\$0.026x4000

Hexagon Head Self Tapping Screw Class 3 AS3566



Part #	Info	Box
81813100	#14-10x50	\$0.068 x1000 per
81813200	#14-10x100	\$0.115 x 500 per

Zinc Alloy Hammer Drive Anchor



Part #	Info	Per Piece	Box
85820206	M6x30	\$0.11 x100	\$0.083 x1000 per
85820208	M6x50	\$0.16 X100	\$0.12 x1000 per

Hanging Nylon wheel with s/s brackets



Part #	Info	Per set	Box
82103100	Hanging Wheel For 27x27 track	\$14.80	\$11.10 x40 sets

Sliding Gate Track (3mm thick) pre-gal



Part #	Info	Per Meter
1098	3m long	\$15.00/ length 5 length per bundle
1099	5.8m long	\$25.00/length Minimum 100 length per order

*= stock available after 1st July,2011

Cutting Disc – for stainless steel



Part #	Info	Per Piece	Box
60110010	Cutting Disc 100x1.0x16	\$0.60 x100	\$0.45 x800 per
60112510	Cutting Disc 125x1.0x22.2mm	\$0.68 x100	\$0.51 x400 per
60123025	Cutting Disc 230x2.5x22.2	\$1.60 x100 per	\$1.20 x100 per

Flap Disc (Flat)



Part #	Info	Per Piece	Box
61210040	100mm Flap Disc Grade 40 - Flat	\$2.60	\$1.95 x200 per
61112510	100mm Flap Disc Grade 60 - Flat	\$2.60	\$1.95 x200 per
61112560	125mm Flap Disc Grade 40 - Flat	\$3.20	\$2.60 x200 per
61123025	125mm Flap Disc Grade 60 - Flat	\$3.20	\$2.60 x200 per

Grinding Disc – for stainless steel



Part #	Info	Per Piece	Box
60112560	Grinding Disc 125x6x22.2	\$1.00 x50	\$0.75 x400 per
60123060	Grinding Disc 230x6.0x22.2	\$2.80 x50 per	\$2.10 x50 per

Flap Disc (Bevel)



Part #	Info	Per Piece	Box
*62210040	100mm Flap Disc Grade 40 - Bevel	\$2.60	\$1.95 x200 per
*62112510	100mm Flap Disc Grade 60 - Bevel	\$2.60	\$1.95 x200 per
*62112560	125mm Flap Disc Grade 40 - Bevel	\$3.20	\$2.60 x200 per
*62123025	125mm Flap Disc Grade 60 - Bevel	\$3.20	\$2.60 x200 per



Terms and Conditions :

All Prices Valid Till End Dec,2011

Payment : Cash On Delivery

Price : Ex-Sydney warehouse, GST not included

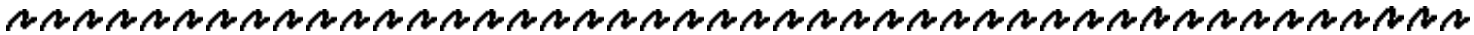
Delivery Cost:

4 % to Sydney, Central Coast, Newcastle & Wollongong (Minimum Charge \$10)

7 % to NSW, ACT, Adelaide, Melbourne, Shepparton, Brisbane, Gold Coast & Sunshine Coast.
(Minimum Charge \$15)

9 % to VIC & TAS (Minimum Charge \$20)

(If unlisted, please call to check freight cost)



**WE MAKE ITEMS TO YOUR DESIGN
AT VERY COMPETITIVE PRICES**



**SHOULD YOU LIKE TO BUY BULK QUANTITIES EX-STOCK SYDNEY,
PLEASE CALL TO SEE WHAT WE OFFER.**

*= stock available after 1st July,2011

**FENCING
COMPONENTS P/L**
8 Simmonds Pl. West Pennant Hills NSW 2125
Tel: 0430-222216 Fax: 02-98724891
www.888hardware.com.au